

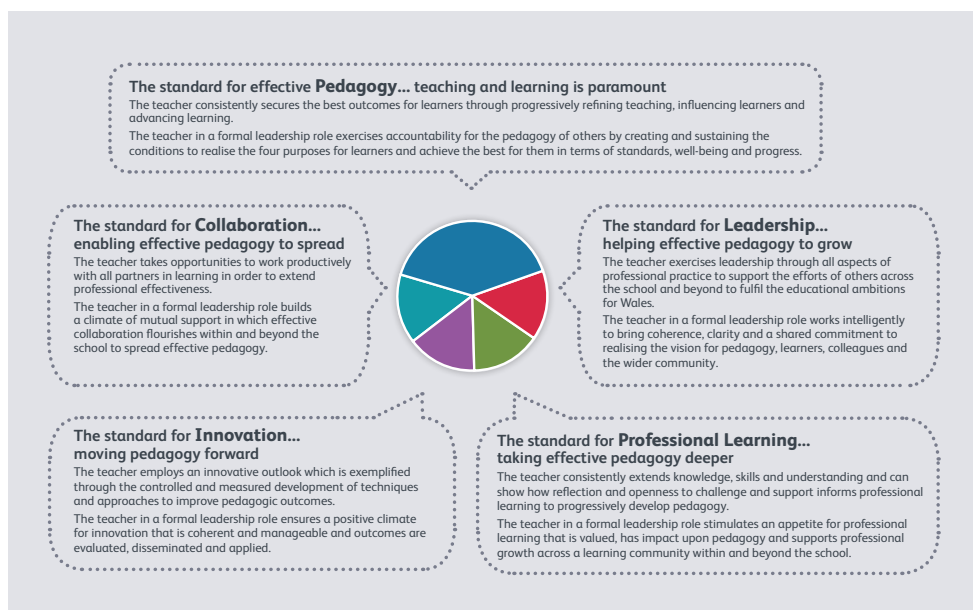


An introduction to the professional standards for teaching and leadership



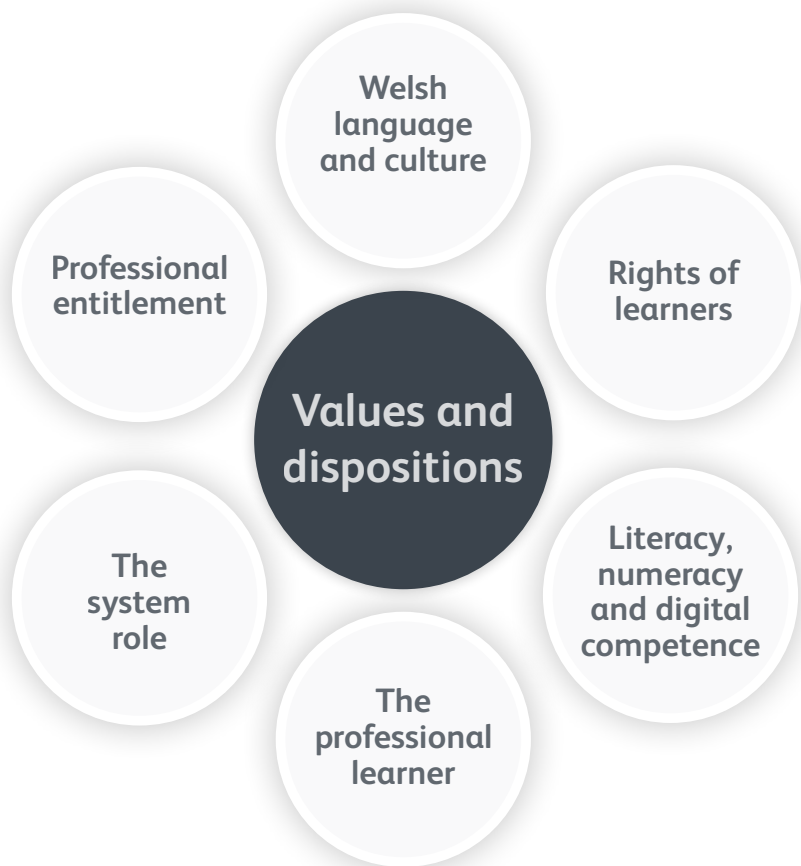
What are the professional standards for teaching and leadership?

Professional standards describe the skills, knowledge and behaviours that characterise excellent practice and support professional growth. The five professional standards for teaching and leadership concentrate on the five essential elements of every teacher's work.



Download the interactive PDF to explore the professional standards in more detail.
learning.gov.wales/professionalstandards

The professional standards are accompanied by overarching values and dispositions that drive all teachers to be the best they can be.



How do the professional standards affect me?

Each professional standard is divided into elements with descriptors that exemplify how the professional standard could apply to a practitioner's work, depending on where that practitioner is in their role and career.

Student teachers and newly qualified teachers (NQTs)

The descriptors identify the outcomes that student teachers and NQTs must achieve and be assessed against to enter the profession.

Serving teachers and leaders

The majority of teachers and leaders will use the five professional standards to reflect on their practice. If required, practitioners can explore the descriptors, which exemplify the professional standards in more detail.

The descriptors also contain an aspirational level which provides a focus for career-long professional learning.

The image displays two screenshots from an interactive PDF. The left screenshot is titled 'Pedagogy' and is categorized under 'TEACHING'. It features a sub-heading 'Refining teaching... towards sustained highly-effective practice' and a section for 'Differentiation'. It lists three descriptors: 'Sustained highly-effective practice descriptor', 'Induction descriptor', and 'QTS descriptor'. The right screenshot is titled 'Collaboration' and is categorized under 'FORMAL LEADERSHIP ROLES'. It features a sub-heading 'Working productively with external agencies' and lists two descriptors: 'Sustained highly-effective formal leadership descriptor' and 'Effective formal leadership descriptor'. Both screenshots include a 'PLP' icon and a home button at the bottom.

Examples of descriptors from the interactive PDF

The new professional standards are aligned to:

reforms
in initial
teacher
education
(ITE)

an evolving
qualifications
framework

the National
Academy for
Educational
Leadership.

The new professional standards support practitioners to strive for sustained excellent practice from initial training through to school leadership.

The Education Workforce Council (EWC) hosts the Professional Learning Passport (PLP) which should be used with the professional standards as a tool to support professional learning.

The PLP is portable and can go with you from job to job or from school to school, provided you are still registered with the EWC.

Professional standards timeline

<ul style="list-style-type: none">Professional standards for teaching and leadership available for use in schools.NQTs commencing induction move to the new professional standards for teaching and leadership.	From September 2017
<ul style="list-style-type: none">Professional standards for teaching and leadership adopted by serving teachers and leaders.Professional standards for teaching and leadership available for use in ITE programmes.Professional standards for assisting teaching available for use in schools.	By September 2018
<ul style="list-style-type: none">Professional standards for teaching and leadership apply to all new ITE programmes.	By September 2019

For further information visit learning.gov.wales/professionalstandards or e-mail professionalstandardsreview@gov.wales

Mae'r ddogfen yma hefyd ar gael yn Gymraeg.
This document is also available in Welsh.