



**Pecyn Cymorth Ymgysylltu ar gyfer lleoliadau
meithrin nas cynhelir a ariennir**

Cwricwlwm i Gymru

Engagement Toolkit for funded non-maintained nursery settings

Curriculum for Wales

Cynnwys

Cyflwyniad	3
Ymgysylltu â rhieni a gofalwyr	4
Negeseuon ac ymadroddion allweddol	6
Negeseuon cyfryngau cymdeithasol	11
Cylchlythyrau	13
Posterï	14
Trefniadau mabwysiadu'r cwricwlwm	15
Popeth sydd ei angen arnoch	17

Contents

Introduction	3
Engaging parents and carers	5
Key messages and phrases	6
Social media posts	11
Newsletters	13
Posters	14
Curriculum adoption arrangements	16
Everything you need	17

Cyflwyniad Introduction

Mae'n gyfnod cyffrous i blant ifanc Cymru!

Fel rhan o'r Cwricwlwm i Gymru, mae'r gwaith o roi'r cwricwlwm ar gyfer lleoliadau meithrin nas cynhelir a ariennir ar waith i ddarparu addysg feithrin mewn lleoliadau gofal plant. Bydd y pecyn cymorth hwn yn eich helpu i gynnwys rhieni a gofalwyr ym mhrofiadau dysgu newydd a chyffrous eu plant. Bydd yn eu galluogi i ddatblygu dealltwriaeth o'r newidiadau yn y cwricwlwm a sut mae'r rhain yn cael eu defnyddio yn eich lleoliad.

Mae'r pecyn cymorth hwn yn rhoi gwybodaeth i chi ei rhannu â rhieni a gofalwyr trwy amrywiaeth o adnoddau a grëwyd i chi eu defnyddio trwy sianeli cyfathrebu eich lleoliad.

It's an exciting time for young children in Wales!

As part of Curriculum for Wales, the implementation of the curriculum for funded non-maintained nursery settings is underway to deliver nursery education in childcare settings. This toolkit will help you engage parents and carers in their children's new and exciting learning experiences. It will enable them to develop an understanding of the changes in the curriculum and how these are applied in your setting.

This toolkit provides you with information to share with parents and carers through a range of resources created for you to use through your setting's own communication channels.



Negeseuon Allweddol
Key Messages

Negeseuon Cyfryngau
Cymdeithasol
Social Media Posts

Templed Cylchlythyr
Newsletter Template

Poster i'w Arddangos
Display Poster

Cyfeirio Rhieni a Gofalwyr
Signposting Parents & Carers

Ymgysylltu â rhieni a gofalwyr

Dyma sut y gallwch gynnwys rhieni a gofalwyr yn addysg eu plentyn a helpu i godi ymwybyddiaeth o sut mae'r cwricwlwm ar gyfer lleoliadau nas cynhelir a ariennir yn cael ei gyflwyno yn eich lleoliad.

Rhannwch negeseuon ar eich sianeli cyfryngau cymdeithasol.

Rydyn ni wedi darparu ambell neges barod y gallwch eu defnyddio ar eich sianeli.



Siaradwch â'ch rhieni a gofalwyr.

Defnyddiwch y negeseuon a'r ymadroddion allweddol rydyn ni wedi'u casglu wrth gyfathrebu â rhieni a gofalwyr.



Cyfathrebwch â rhieni a gofalwyr trwy e-bost neu sianeli cyfathrebu eraill.

We've provided some key messages you may wish to use on other digital platforms such as WhatsApp, Facebook, Twitter.



Cyfathrebu â rhieni a gofalwyr



Ysgrifennwch am y newidiadau i'r cwricwlwm yn eich cylchlythyr.

Efallai yr hoffech ddefnyddio'r templed hawdd ei ddefnyddio sy'n cael ei ddarparu.



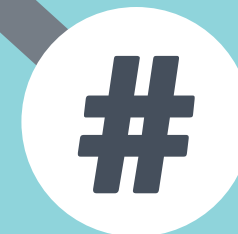
Arddangoswch bosteri mewn manau cymunedol ar gyfer rhieni, gofalwyr ac aelodau staff.

Lawrlwythwch ac arddangoswch ein poster.



Cyfeiriwch eich rhieni a gofalwyr.

Rydyn ni wedi rhestru cyfrifon a hashnodau a allai fod o ddiddordeb iddynt.



Engaging parents and carers

Here's how you can engage parents and carers in their child's learning and help raise awareness of how the curriculum for funded non-maintained settings is being delivered at your setting.

Share posts on your social media channels.

We've provided some ready-made posts that you can use on your own channels.



Write about the curriculum changes in your newsletter.

You may wish to use the easy to use template provided.



Talk to your parents and carers.

Use the key messages and phrases we've gathered in your communication with parents and carers.



Display posters in communal areas for parents, carers and staff members.

Download and display our poster.



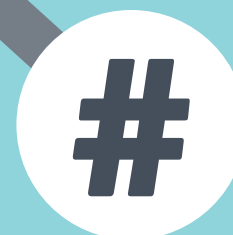
Communicate with parents and carers via email or other communication channels.

We've provided some key messages you may wish to use on other digital platforms such as WhatsApp, Facebook, Twitter.



Signpost your parents and carers.

We've listed some accounts and hashtags that may be of interest to them.



Communicating with parents and carers



Negeseuon ac ymadroddion allweddol

Key messages and phrases



Bydd rhannu negeseuon allweddol ac ymadroddion cyffredin gyda rhieni a gofawyr yn eu helpu i ddatblygu dealltwriaeth o'r Cwricwlwm i Gymru a sut mae'n cael ei ddefnyddio yn eich lleoliad. Gallai'r rhain gynnwys:

Sharing key messages and common phrases with parents and carers will help them develop an understanding of Curriculum for Wales and how it is applied at your setting. These might include:



Cwricwlwm ar gyfer lleoliadau meithrin nas cynhelir a ariennir

Mae Llywodraeth Cymru wedi gweithio gydag arbenigwyr ac ymarferwyr blynyddoedd cynnar i gynllunio cwricwlwm ar gyfer lleoliadau meithrin nas cynhelir a ariennir. Mae hyn yn rhan o fframwaith y Cwricwlwm i Gymru.

Y pum llwybr datblygiadol

Mae gan y cwricwlwm ar gyfer lleoliadau meithrin nas cynhelir a ariennir bum llwybr datblygiadol allweddol sy'n hanfodol i addysg a datblygiad pob plentyn ifanc;

- Perthyn
- Cyfathrebu
- Archwilio
- Datblygiad corfforol
- Lles.



Curriculum for funded non-maintained nursery settings

The Welsh Government has worked with early years specialists and practitioners to design a curriculum for funded non-maintained nursery settings. This is part of the Curriculum for Wales framework.

The five developmental pathways

The curriculum for funded non-maintained nursery settings has five key developmental pathways that are fundamental to the learning and development of all young children;

- Belonging
- Communication
- Exploration
- Physical development
- Well-being.

Negeseuon ac ymadroddion allweddol

Key messages and phrases



Y pedwar diben

Mae'r Cwricwlwm i Gymru yn darparu cymorth i blant ar ddechrau eu taith tuag at fod yn:

- Ddysgwyr uchelgeisiol, galluog
- Cyfranwyr mentrus, creadigol
- Dinasyddion moesegol, gwybodus
- Unigolion iach, hyderus

Y tri sgil trawsgwricwlaidd

Mae llythrennedd, rhifedd a chymhwysedd digidol yn sgiliau gorfodol ar draws y cwricwlwm cyfan.

Wrth gynllunio profiadau dysgu, rydyn ni'n sicrhau bod plant yn cael cyfleoedd i ddefnyddio, datblygu ac ymestyn y sgiliau hyn wrth chwarae ac mewn cyd-destunau ystyrlon, gan ddefnyddio'r pum llywbr datblygiadol.



The four purposes

Curriculum for Wales provides support for children at the start of their journey towards being:

- Ambitious, capable learners
- Enterprising, creative contributors
- Ethical, informed citizens
- Healthy, confident individuals

The three cross-curricular skills

Literacy, numeracy and digital competence are mandatory skills across the whole curriculum.

When planning learning experiences, we ensure that children have opportunities to apply, develop and extend these skills during their play and in meaningful contexts, using the five developmental pathways.

Negeseuon ac ymadroddion allweddol

Key messages and phrases



Diddordebau plant

Rydyn ni'n gwybod bod plant yn dysgu orau pan fydd profiadau'n ysgogi eu chwilfrydedd, yn tanio eu dychymyg ac yn harneisio eu diddordebau. Rydyn ni'n cydnabod bod pob plentyn yn unigryw a bod gan bob un ohonynt deithiau dysgu unigryw. Rydyn ni'n sicrhau bod plant yn teimlo eu bod yn cael eu gweld, eu clywed a'u cynnwys pan fyddant gyda ni.

Profiadau difyr

Mae profiadau difyr yn hanfodol i gefnogi dysgwyr i ddatblygu sgiliau cymdeithasol a chyfathrebu. Mae angen profiadau ar blant sy'n eu helpu i feithrin gwydnwch emosiynol a dylid rhoi amser a chymorth iddynt adnabod eu teimladau a theimladau pobl eraill. Bydd profiadau difyr yn cael eu cynllunio sy'n cefnogi pob plentyn i ddatblygu ar ei gyflymder ei hun. Bydd y profiadau hyn yn adlewyrchu eu diddordebau ac yn eu cefnogi i ddatblygu hyder yn eu sgiliau datblygol. Cânt eu cynllunio mewn amrywiaeth o gyd-destunau, dan do ac yn yr awyr agored.

Children's interests

We know children learn best when experiences stimulate their curiosity, ignite their imaginations and harness their interests. We recognise all children are unique and they all have unique learning journeys. We ensure children feel seen, heard and involved when they are with us.

Enabling adults

The role of enabling adults is integral to the progress of all children. They set the expectation for learning by creating emotionally safe environments and use their careful observations to follow a child's interests to plan future learning experiences. They are consistent in their care, model compassion and kindness and develop learners' confidence in communicating with others by valuing their attempts to express thoughts, feelings, ideas and opinions. They also help make strong connections between the learner's home and wider community.

Oedolion sy'n Galluogi Dysgu

Maen nhw'n gosod y disgwyliad ar gyfer dysgu trwy greu amgylcheddau emosiynol ddiogel ac yn defnyddio eu harsylwadau gofalus i ddilyn diddordebau plentyn i gynllunio profiadau dysgu yn y dyfodol. Maen nhw'n gyson yn eu gofal, yn modelu tosturi a charedigrwydd ac yn datblygu hyder dysgwyr wrth gyfathrebu ag eraill trwy werthfawrogi eu hymdrechion i fynegi meddyliau, teimladau, syniadau a barn. Maen nhw hefyd yn helpu i wneud cysylltiadau cryf rhwng cartref y dysgwr a'r gymuned ehangach.

Amgylcheddau effeithiol

Bydd ein hamgylcheddau dan do ac awyr agored yn cynnig cyfleoedd i blant archwilio, ymchwilio a herio eu hunain. Bydd yr amgylcheddau'n darparu cyd-destunau dilys ar gyfer dysgu am y byd o'u cwmpas a sut y gallant ofalu amdano. Bydd amgylcheddau effeithiol yn cefnogi ymdeimlad plant o gynefin.

Engaging experiences

Engaging experiences are essential to supporting learners to develop social and communication skills. Children need experiences that help them build emotional resilience and they should be given time and support to recognise their feelings and the feelings of others. Engaging experiences will be planned that support all children to develop at their own pace. These experiences will reflect their interests and support them in developing confidence in their emerging skills. They will be planned in a variety of contexts, both indoors and outdoors.

Effective environments

Our indoor and outdoor environments will offer opportunities for children to explore, investigate and challenge themselves. The environments will provide authentic contexts for learning about the immediate world around them and how they can look after it. Effective environments will support children's sense of cynefin (a Welsh word reflecting a 'sense of place').

Negeseuon ac ymadroddion allweddol

Key messages and phrases



Chwarae a dysgu yn seiliedig ar chwarae

Mae chwarae'n bwysig iawn i blant ifanc - dyna sut maen nhw'n dysgu orau. Mae'n hawl sylfaenol i bob plentyn. Byddwn yn rhoi amser, lle ac adnoddau i blant gymryd rhan mewn chwarae dilys. Bydd chwarae a dysgu chwareus yn llywio ein cynllunio a'n darpariaeth i sicrhau bod pob plentyn yn datblygu cariad at ddysgu.

Dysgu dilys a phwrpasol

Rydyn ni'n darparu cyfleoedd dysgu sy'n berthnasol i ddiddordebau plant ifanc. Bydd profiadau sydd wedi'u gwreiddio mewn cyd-destunau bywyd go iawn yn helpu plant i wneud cysylltiadau rhwng y cartref a'r lleoliad. Byddant, trwy gyd-destunau cyfarwydd, yn gallu defnyddio eu gwybodaeth a chyfnerthu eu sgiliau.

Play and play based learning

Play is very important to young children - it is how they learn best. It is a fundamental right for all children. We will provide time, space and resources for children to engage in authentic play. Play and playful learning will inform our planning and provision to ensure all children develop a love of learning.

Outdoor learning

Our outdoor environments will provide opportunities for children to engage with nature. They will offer spaces for collaborative play, for quiet contemplation and problem solving. Most of all outdoors will offer hands on learning of the immediate environment.

Dysgu yn yr awyr agored

Bydd ein hamgylcheddau awyr agored yn rhoi cyfleoedd i blant ymgysylltu â byd natur. Byddant yn cynnig gofodau ar gyfer chwarae cydweithredol, ar gyfer myfyrdod tawel a datrys problemau. Yn bennaf oll bydd yr awyr agored yn cynnig dysgu ymarferol am yr amgylchedd uniongyrchol.

Llythrennedd corfforol

Mae angen cyfleoedd ar blant i ddatblygu amrywiaeth eang o sgiliau symud sylfaenol, sy'n sail ar gyfer symud gyda chymhwysedd a hyder mewn bywyd bob dydd. Dylai hyn gynnwys creu amser, gofod a chyfle i blant brofi amrywiaeth o fathau o chwarae sy'n gosod y sylfeini ar gyfer llythrennedd corfforol yn y blynyddoedd cynnar.

Authentic and purposeful learning

We provide learning opportunities that are relevant to young children's interests. Experiences that are rooted in real-life contexts will help children to make connections between home and setting. They will, through familiar contexts, be able to apply their knowledge and consolidate their skills.

Physical literacy

Children need opportunities to develop a wide-range of fundamental movement skills, which are the basis for moving with competence and confidence in every day life. This should include creating time, space and opportunity for children to experience a range of play types that lay the foundations for physical literacy in the early years.

Negeseuon ac ymadroddion allweddol

Key messages and phrases



Datblygu ar eu cyflymder eu hunain

Rydyn ni'n deall ac yn cefnogi'r angen i helpu plant i ddatblygu ar eu cyflymder eu hunain. Defnyddiwn ein gwybodaeth am ddatblygiad plant a chynnydd plant unigol i roi cefnogaeth a her.

Developing at their own pace

We understand and recognise the need to support children to develop at their own pace. We use our knowledge of child development and individual childrens progress to provide support and challenge.

Pontio

Mae lleoliadau'n chwarae rhan hanfodol wrth bontio a pharatoi'r plentyn ar gyfer yr ysgol.

Bydd amser eich plentyn yn y lleoliad yn ei helpu i ddatblygu cariad gydol oes at ddysgu ac yn rhoi amrywiaeth o sgiliau iddo i'w alluogi i gyrraedd ei botensial, nawr ac yn y dyfodol.

Transition

Settings play a vital part in the preparation and transition into school.

Your child's time in the setting will help them develop a lifelong love of learning and provide them with a range of skills to enable them to reach their potential, both now and in the future.



Negeseuon cyfryngau cymdeithasol

Social media posts



Rydyn ni'n eich annog i rannu eich enghreifftiau eich hun i ddangos sut mae eich lleoliad yn gweithredu'r Cwricwlwm i Gymru. I wneud hyn yn haws, rydyn ni wedi darparu ambell neges cyfryngau cymdeithasol barod y gallwch eu defnyddio ar eich sianeli:

We encourage you to share your own examples to show how your setting is implementing Curriculum for Wales. To make this easier, we have provided some ready-made social media posts that you can use on your own channels:

Facebook / Instagram / Twitter	
Delwedd o weithgaredd chwarae yn eich lleoliad	Mae'n gyfnod cyffrous i blant ifanc yng Nghymru wrth i'r #CwricwlwmGymru fynd rhagddo. Dyma beth mae'r plant yn [ENW'R LLEOLIAD] wedi bod yn ei wneud!
Dolen i'r URL [Mae Addysg yn Newid]	Mae'r Cwricwlwm i Gymru wedi dod â newidiadau i rai o'r pethau rydyn ni'n eu gwneud yn [ENW'R LLEOLIAD]. Oes gennych chi unrhyw gwestiynau? Dim ond gofyn sydd raid! Byddem yn hapus i sgwrsio â chi! #CwricwlwmGymru [URL]
Dolen i'r URL [Mae Addysg yn Newid]	Mae'r #CwricwlwmGymru yn sicrhau dysgu sy'n hwyl, yn gyffrous ac yn ddifyr. Dysgwch sut a pham trwy ymweld â [URL]
Delwedd o weithgaredd chwarae yn eich lleoliad	Ni fu dysgu erioed yn gymaint o hwyl! Gyda ffocws ar ddatblygu ar eu cyflymder eu hunain, mae'r plant yn [ENW'R LLEOLIAD] yn dysgu trwy amrywiaeth o brofiadau bywyd go iawn hwyliog a chyffrous #CwricwlwmGymru

Facebook / Instagram / Twitter	
Image of play based activity at your setting	It's an exciting time for young children in Wales as #CurriculuForWales is underway. Here's what the children at [SETTING NAME] have been up to!
Link to URL [Education is Changing]	Curriculum for Wales has brought changes to some of the things we do at [SETTING NAME]. Have any questions? Just ask us! We'd be happy to talk to you about it! #CurriculumForWales [URL]
Link to URL [Education is Changing]	#CurriculumForWales ensures learning that is fun, exciting and engaging. Learn how and why by visiting [URL]
Image of play based activity at your setting	Learning has never been so much fun! With a focus on developing at their own pace, the children at [SETTING NAME] are learning through a range of fun and exciting real-life experiences #CurriculumForWales

Negeseuon cyfryngau cymdeithasol

Social media posts



Facebook / Instagram / Twitter	
Delwedd o weithgaredd chwarae	Mae gan blant angen cryf i chwarae sy'n eu helpu i archwilio amrywiaeth o emosiynau a dysgu am y byd o'u cwmpas. Ddeall mwy am ddysgu trwy chwarae yn [URL] #CwricwlwmiGymru
Delwedd o weithgaredd chwarae	Trwy weithgareddau chwarae wedi'u teilwra o amgylch yr hyn mae eich plentyn yn ei fwynhau a sut mae'n hoffi treulio ei amser, mae'r plant wedi bod yn brysur yn 'dysgu trwy wneud' yma yn [ENW'R FEITHRINFA] #CwricwlwmiGymru
Delwedd o weithgaredd awyr agored	Mae'r awyr agored yn chwarae rhan mor bwysig yn y #CwricwlwmiGymru. Mae cysylltu â byd natur yn cefnogi datblygiad corfforol, personol a chymdeithasol eich plentyn ac mae'r plant wedi bod yn ei gofreiddio yma yn [ENW'R FEITHRINFA]
Delwedd o blant	Fel meithrinfa, rydyn ni'n falch o helpu gyda pharatoi a phontio i'r ysgol a chynnig dechrau da i'r plant ar gariad gydol oes at ddysgu #CwricwlwmiGymru

Facebook / Instagram / Twitter	
Image of play based activity	Children have a strong need to play which helps them explore a range of emotions and learn about the world around them. Find out more about learning through play at [URL] #CurriculumForWales
Image of play based activity	Through play-based activities tailored around what your child enjoys and how they like to spend their time, the children have been busy 'learning by doing' here at [NURSERY NAME] #CurriculumForWales
Image of outdoor activity	The outdoors plays such an important part in the #CurriculumforWales. Connecting with the natural world supports your child's physical, personal and social development and the children have been embracing it here at [NURSERY NAME]
Image of children	As a nursery, we're proud to assist with the preparation and transition into school and offer the children a head start on a life-long love of learning #CurriculumForWales

Cylchlythyrau Newsletters

Lawrlwythwch ein
templod cylchlythyr yma

Download our newsletter
template here



Gall cylchlythyrau ac e-byst fod yn ffordd wych o rannu sut mae eich lleoliad yn rhoi'r Cwricwlwm i Gymru ar waith.

Gallwch ddewis cynnwys y neges ganlynol mewn cylchlythyr neu e-bost sydd eisoes yn bodoli at rieni a gofalwyr;

Mae'n gyfnod cyffrous i blant ifanc Cymru!

Mae'r Cwricwlwm i Gymru yn mynd rhagddo ac rydyn ni eisoes yn gweld cymaint mae'r plant yn ymgysylltu ac yn ymateb i'r ffyrdd newydd o ddysgu.

Gyda ffocws ar ddatblygu ar ei gyflymder ei hun, mae eich plentyn yn dysgu trwy amrywiaeth eang o brofiadau hwyliog a chyffrous a fydd yn ei helpu i dyfu a datblygu dealltwriaeth o'r byd o'i gwmpas.

Trwy weithgareddau sy'n seiliedig ar chwarae sydd wedi'u teilwra o amgylch yr hyn mae eich plentyn yn ei fwynhau, mae eich plentyn yn 'dysgu trwy wneud' trwy brofiadau dilys a phwrpasol, gan feithrin ei chwillfrydedd, hyder a chreadigrwydd.

Bydd y Cwricwlwm i Gymru yn parhau i esblygu mewn ymateb i'n cymuned o blant, rhieni a gofalwyr.

I gael rhagor o wybodaeth am ein cwricwlwm sy'n rhan o'r Cwricwlwm i Gymru ewch i:

Cwricwlwm ar gyfer lleoliadau meithrin
nas cynhelir a ariennir

Newsletters and emails can be a great way to share how your setting is implementing Curriculum for Wales.

You may choose to include the following message within an existing newsletter or email to parents and carers;

It's an exciting time for young children in Wales!

Curriculum for Wales is underway and we're already seeing how much the children are engaging and responding to the new ways of learning.

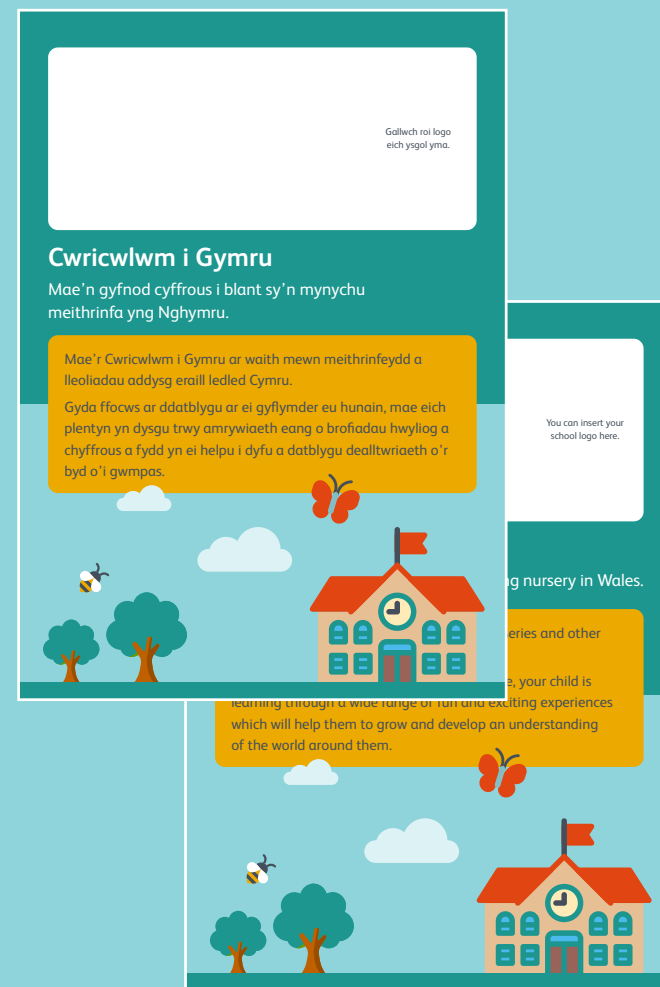
With a focus on developing at their own pace, your child is learning through a wide range of fun and exciting experiences which will help them to grow and develop an understanding of the world around them.

Through play-based activities tailored around what your child enjoys, your child is 'learning by doing' through authentic and purposeful experiences, nurturing their curiosity, confidence and creativity.

Curriculum for Wales will continue to evolve in response to our community of children, parents and carers.

For more information about our curriculum which is part of Curriculum for Wales visit:

Curriculum for funded non-maintained nursery settings



Poster



Mae'n gyfnod cyffrous i blant ifanc Cymru!

Mae eich plentyn yn datblygu cariad gydol oes at ddsygu fel rhan o'r Cwricwlwm i Gymru.

Bydd plant yn dysgu trwy addysg ddilys a phwrpasol yn seiliedig ar chwarae a arweinir gan eu diddordebau eu hunain. Byddwn yn arsylwi ar eu cynnydd fel y gallwn ddarparu'r cymorth a'r her gywir wrth iddynt ddatblygu ar eu cyflymder eu hunain.

Rydyn ni yma i wneud yn siŵr bod y profiadau a'r amgylcheddau dysgu yn hwyl, yn ddeniadol ac yn effeithiol trwy:

- Creu amgylcheddau emosiynol ddiogel
- Meithrin hyder, chwilfrydedd, a chreadigrwydd
- Cynnig cyfleoedd i archwilio, ymchwilio a herio
- Datblygu ymdeimlad a berthyn a lles
- Cefnogi plant i ddatblygu amrywiaeth o sgiliau i'w galluogi i gyrraedd eu potensial, nawr ac yn y dyfodol.

Mae dysgu trwy chwarae yn helpu eich plentyn i wneud synnwyr o'r byd, gan gefnogi sgiliau fferydd, iaith a chyfathrebu, yn ogystal â sgiliau cymdeithasol a chorfforol.



Yn dysgu mwy am ein cwricwlwm sy'n rhan o'r Cwricwlwm i Gymru ewch i:



Lawrlwythwch ein poster yma

Download our poster here

It's an exciting time for young children in Wales!

Your child is developing a lifelong love of learning as part of Curriculum for Wales.

Children will learn through play-based, authentic & purposeful learning led by their own interest. We will observe their progress so we can provide the right support and challenge as they develop at their own pace.

We're here to make sure the learning experiences and environments are fun, engaging and effective by:

- Creating emotionally safe environments
- Nurturing curiosity confidence, and creativity
- Offering opportunities to explore, investigate and challenge
- Developing a sense of belonging and well-being
- Supporting children to develop a range of skills to enable them to reach their potential, both now and in the future.

Learning through play helps your child make sense of the world, supporting speech, language and communication skills, as well as social and physical skills.



To learn more about our curriculum which is part of Curriculum for Wales visit:



Trefniadau mabwysiadu'r cwricwlwm



Mae Cwricwlwm i Gymru yn ei gwneud yn ofynnol i leoliadau meithrin nas cynhelir a ariennir gyhoeddi crynodeb o'u cwricwlwm mabwysiedig. Ar gyfer lleoliadau sydd wedi mabwysiadu'r cwricwlwm ar gyfer lleoliadau meithrin a ariennir nas cynhelir, rhoddir crynodeb enghreifftiol yma y gall eich lleoliad ei addasu i helpu i gyflawni'r gofyniad hwn. Bydd y crynodeb hwn yn helpu rhieni a gofalwyr i ddeall llawer o'r cysyniadau a'r egwyddorion a amlinellir yn y cwricwlwm sy'n cael eu cwmpasu yn y pecyn cymorth hwn a sut y bydd y cwricwlwm mabwysiedig o fudd ac yn cefnogi dysgu a datblygiad plant.

Mae'r lleoliad hwn wedi mabwysiadu'r cwricwlwm ar gyfer lleoliadau meithrin a ariennir nas cynhelir a gyhoeddwyd gan Lywodraeth Cymru i gefnogi dysgu a datblygiad pob plentyn sy'n mynychu.

Cwricwlwm ar gyfer lleoliadau meithrin nas cynhelir a ariennir

Mae'r Cwricwlwm hwn:

- rhan o fframwaith y Cwricwlwm i Gymru ac yn canolbwyntio ar anghenion dysgu a datblygu plant **3 a 4 oed**, a'r rhai ag anghenion ychwanegol sydd ar gam datblygiad tebyg
- seiliedig ar **bum llwybr datblygiadol** sy'n sylfaenol i ddysgu a datblygiad pob plentyn ifanc - perthyn, cyfathrebu, archwilio, datblygiad corfforol a lles
- cefnogi eich plentyn ar ddechrau ei daith addysgol i ddod yn ddysgwr uchelgeisiol, galluog; cyfrannwr mentrus, creadigol; dinesydd moesegol, gwybodus ac unigolyn iach, hyderus – y cyfeirir atynt fel y '**pedwar diben**' yn y Cwricwlwm i Gymru
- cynnwys cyfleoedd i ddefnyddio, datblygu ac ymestyn **sgiliau trawsgwricwlaidd** y Cwricwlwm i Gymru – llythrennedd, rhifedd a chymhwysedd digidol
- cefnogi ac atgyfnerthu profiadau dysgu eich plentyn trwy gefnogaeth a ddarperir gan ymarferwyr medrus yn y lleoliad (y cyfeirir ato yn y cwricwlwm fel **oedolion sy'n galluogi dysgu**) sy'n creu amgylcheddau dysgu sy'n emosiynol ddiogel
- sicrhau bod y lleoliad yn darparu **profiadau difyr** i gefnogi eich plentyn i ddatblygu ar ei gyflymder ei hun, gan adlewyrchu ei ddiddordebau sydd hefyd yn ei gefnogi i ddatblygu hyder yn ei sgiliau datblygol
- darparu **amgylcheddau effeithiol** a fydd yn cynnig cyfleoedd i'ch plentyn archwilio, ymchwilio a herio ei hun
- sicrhau bod **chwarae** dan do ac awyr agored a **dysgu seiliedig ar chwarae** – y profwyd mai dyma'r ffordd fwyaf effeithiol i'ch plentyn ddysgu – yn ganolog i brofiad dysgu eich plentyn a sut mae'r holl ddysgu'n cael ei gynllunio, ac
- yn sicrhau bod **datblygiad plentyn** yn greiddiol iddo gyda phlant yn cael eu harsylwi fel y gellir darparu cefnogaeth a her gan sicrhau bod eich plentyn yn cael ei gefnogi i wneud cynnydd ar gyflymder sy'n briodol iddo ef neu hi

Yn y lleoliad hwn, rydyn ni'n gwybod bod darpariaeth addysg feithrin o ansawdd uchel yn hanfodol i ddatblygiad plant a thrwy'r cwricwlwm hwn bydd ymarferwyr yn darparu'r profiadau, y wybodaeth a'r sgiliau sydd eu hangen ar gyfer dysgu gydol oes a chyflogaeth yn y dyfodol ac mae pob un ohonynt yn dechrau yn y blynyddoedd cynnar. Mae'r cwricwlwm hwn yn anelu at greu tueddiadau cadarnhaol tuag at ddysgu mewn plant, a fydd, o'u meithrin, yn para am oes ac yn darparu'r sylfaen gadarn sydd ei hangen ar ein holl blant i'w cefnogi i wireddu pedwar diben y Cwricwlwm i Gymru.

Bydd y modd y caiff y wybodaeth hon ei 'chyhoeddi' i leoliadau ei hystyried yn dibynnu ar amgylchiadau unigol a'r dulliau arferol o gyfathrebu, ond efallai y bydd y dulliau cyfryngau amrywiol a amlinellir yn y pecyn cymorth hwn yn cael eu defnyddio fel ffordd o gyrraedd rhieni, gofalwyr a'r gymuned ehangach.

Mae Llywodraeth Cymru yn awyddus i arddangos unrhyw ffyrdd y mae crynodebau wedi'u datblygu a'u rhannu. Os hoffech rannu eich dull o weithredu, rhowch wybod i ni drwy gysylltu â'r blwch post yn foundationlearning@gov.wales

Ar gyfer lleoliadau sydd wedi dewis peidio â mabwysiadu'r cwricwlwm a gyhoeddwyd gan Lywodraeth Cymru, mae cyngor pellach ar y trefniadau i gyhoeddi crynodeb o'r cwricwlwm ar gael yn:

Crynodeb o'r ddeddfwriaeth - Hwb (llyw.cymru)

Curriculum adoption arrangements



Curriculum for Wales requires funded non-maintained nursery settings to publish a summary of their adopted curriculum. For settings which have adopted the curriculum for funded non-maintained nursery settings an example summary is provided here which can be adapted by your setting to help fulfil this requirement. This summary will help parents and carers understand many of the concepts and principles outlined in the curriculum covered in this toolkit and how the adopted curriculum will benefit and support the learning and development of children.

This setting has adopted the curriculum for funded non-maintained nursery settings published by the Welsh Government to support the learning and development of all children who attend.

Curriculum for funded non-maintained nursery settings

This curriculum:

- is part of the Curriculum for Wales framework and focusses on the learning and development needs of children aged **3 and 4 years old**, and those with additional needs who are at a similar stage of development
- is based on **five developmental pathways** which are fundamental to the learning and development of all young children - belonging, communication, exploration, physical development and well-being
- supports your child at the start of their educational journey to become ambitious, capable learners; enterprising, creative contributors; ethical, informed citizens and healthy, confident individuals— referred to as the **‘four purposes’** in Curriculum for Wales
- includes opportunities to apply, develop and extend Curriculum for Wales **cross-curriculum skills** – literacy, numeracy and digital competence
- supports and reinforces your child’s learning experiences through guidance provided by skilled practitioners at the setting (referred to in the curriculum as **enabling adults**) who create emotionally safe environments for learning
- ensures the setting provides **engaging experiences** to support your child to develop at their own pace, reflecting their interests which also support them in developing confidence in their emerging skills
- provides **effective environments** which will offer opportunities for your child to explore, investigate and challenge themselves
- ensures that indoor and outdoor **play and play-based learning** - proven to be the most effective way for your child to learn - is central to your child’s learning experience and how all learning is planned, and
- has **child development** at its core with children being observed so support and challenge can be provided ensuring your child is supported to progress at a pace appropriate to them.

At this setting we know that high-quality nursery education provision is essential to children’s development and through this curriculum practitioners will provide the experiences, knowledge and skills needed for lifelong learning and future employment all of which begin in the early years. This curriculum aspires to create in children positive dispositions towards learning which, if nurtured, will last a lifetime and provide the firm foundation which all our children need to support them in realising the four purposes of Curriculum for Wales.

How this information is ‘published’ will be for settings to consider depending on individual circumstances and usual methods of communicating, but the various media methods outlined in this toolkit might be employed as a way of reaching parents, carers and the wider community.

The Welsh Government is keen to showcase any ways in which summaries have been developed and shared. If you feel you would like to share your approach please let us know by contacting the mailbox at foundationlearning@gov.wales

For settings which have chosen not to adopt the Welsh Government’s published curriculum further advice on the arrangements to publish a curriculum summary can be found at:

Curriculum for Wales: the journey to curriculum roll-out - Hwb (gov.wales)

Popeth sydd ei angen arnoch

Everything you need

Gall fod yn ddefnyddiol cyfeirio rhieni a gofalwyr at y canlynol:

Twitter



@LIC_Addysg / @WG_Education
@dechraucartref / @edubeginsathome
@HwbAddysg_Cymru

It may be useful to signpost parents and carers to the following:

Facebook



addysgcymru / educationwales
dechraucartref / beginsathome

YouTube



Addysg Cymru / Education Wales
Nursery education for 3 and 4 year olds

Gwefannau Websites



gov.wales/education-changing
hwb.gov.wales

Hashnodau i'w defnyddio Hashtags to use



#CwricwlwmiGymru
#CurriculumForWales

CLICIWCH YMA

I gael mynediad at yr holl adnoddau sydd yn y pecyn cymorth hwn i'w defnyddio ar eich sianeli cyfathrebu



CLICK HERE

To access all of the resources featured in this toolkit to use across your communication channels