

# ROBERT OWEN PROJECT

Guide to Co-operatives and Social Business




Co-operatives and Social Business in Careers and Work Related Experiences (CWRE)



# GUIDE TO CO-OPERATIVES AND SOCIAL BUSINESS

CO-OPERATIVES

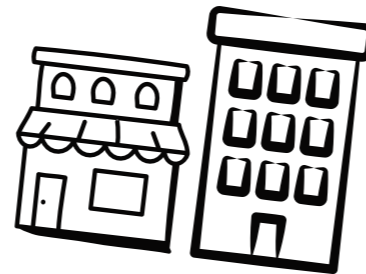
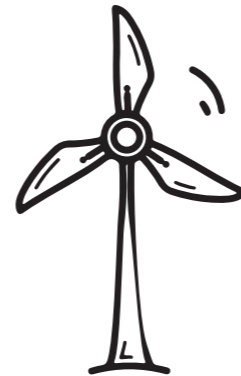
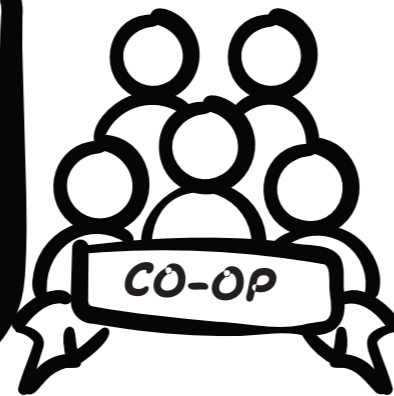
SOCIAL ENTERPRISE



A way to  
transform your  
community  
through trade

## WHAT IS A CO-OPERATIVE?

A business run by and for its members



### EXAMPLES INCLUDE:

- Community owned business – financed and owned by the community
- Worker Co-op – business owned by workers
- Other businesses all working together – a consortia or marketing co-op

### IMPACT

Give people control, offer fair work, chance to improve a service or community

### SHARED VALUES

Co-operatives share the same values and principles.

### PRINCIPLES

- Democratic member control
- Member economic participation
- Autonomy and independence
- Education and training
- Co-operation amongst co-operatives
- Concern for the community

### VALUES

- Self help
- Self responsibility
- Democracy
- Equity
- Equality
- Solidarity
- Honesty
- Openness
- Social responsibility
- Caring for the Community

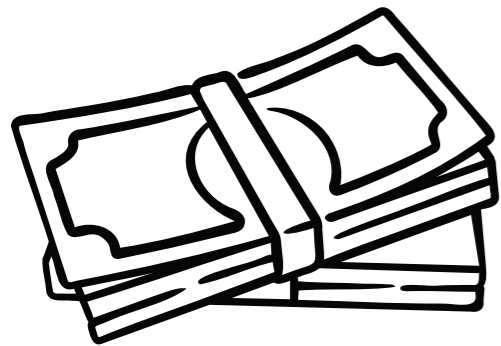


## WALES

Co-operatives in Wales

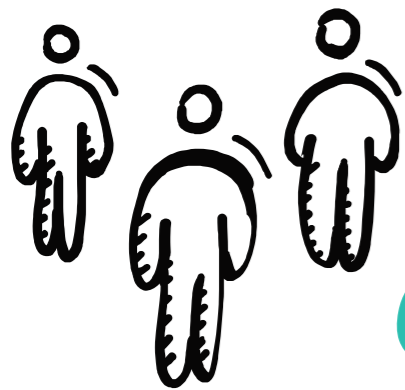
**521**

co-ops



**£0.5bn**

turnover



**5K**

employed



**0.3 million**

members

## WORLDWIDE

From Cardiff to Cairo there are co-operatives

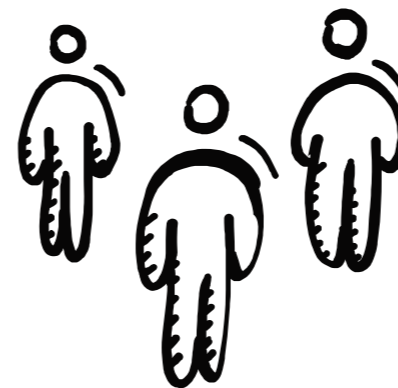


**3 million**

co-ops around the world

**Employ 10%**

of the worlds population



**1.2 billion**

members



## SOCIAL ENTERPRISE

A business that trades to create change. The business puts the profits back in the business or towards the social goal.



“A social enterprise is a business with primarily social objectives whose surpluses are principally reinvested in the business or in the community, rather than being driven by the need to maximise profit for shareholders and owners.”

Social Enterprise Strategy for Wales, 2020

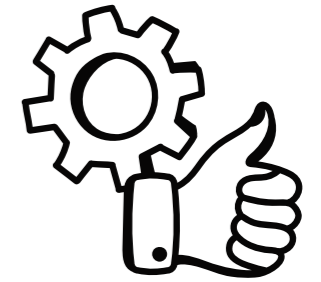
### EXAMPLES:



Business providing opportunities for disadvantaged people



Helping the environment



Making better product or service

### IMPACT

Massive impact on the economy and society helping people.

## **SOCIAL BUSINESSES**

- Co-operatives
- Social enterprises
- Employee owned businesses

### **HOW BIG IS SOCIAL BUSINESS IN WALES?**



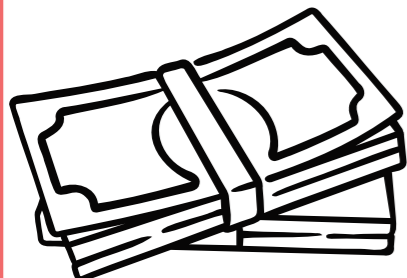
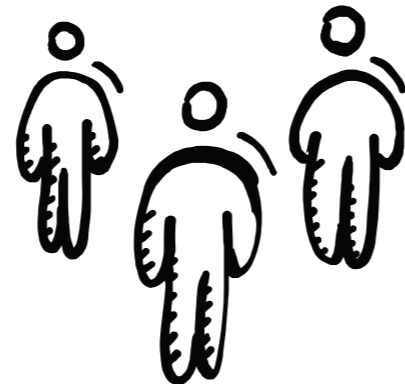
**2800**  
businesses

**55K**

workers and

**54K**

volunteers



**£4.6 billion**

value to economy of Wales

### **DIFFERENT LEGAL FORMS YOU MIGHT HEAR:**

- CIC – Community Interest Company
- CLG – Company Limited by Guarantee
- Mutual – also a type of social business with members e.g. a building society

These are different to privately owned companies where shares are held privately.

### **OTHER TERMS**

- AGM – annual general meeting
- Secretary – position on the board – this person makes notes for records
- Chair – person who co-ordinates the board
- Employee Buy Out – the business owner sells the business to the employees who become the owners
- Shares – owning part of a business. People can own a share in a co-operative but everyone is equal to vote on decisions

### **REFERENCES**

- ICA
- Co-ops UK
- Mapping the Social Business Sector 2022