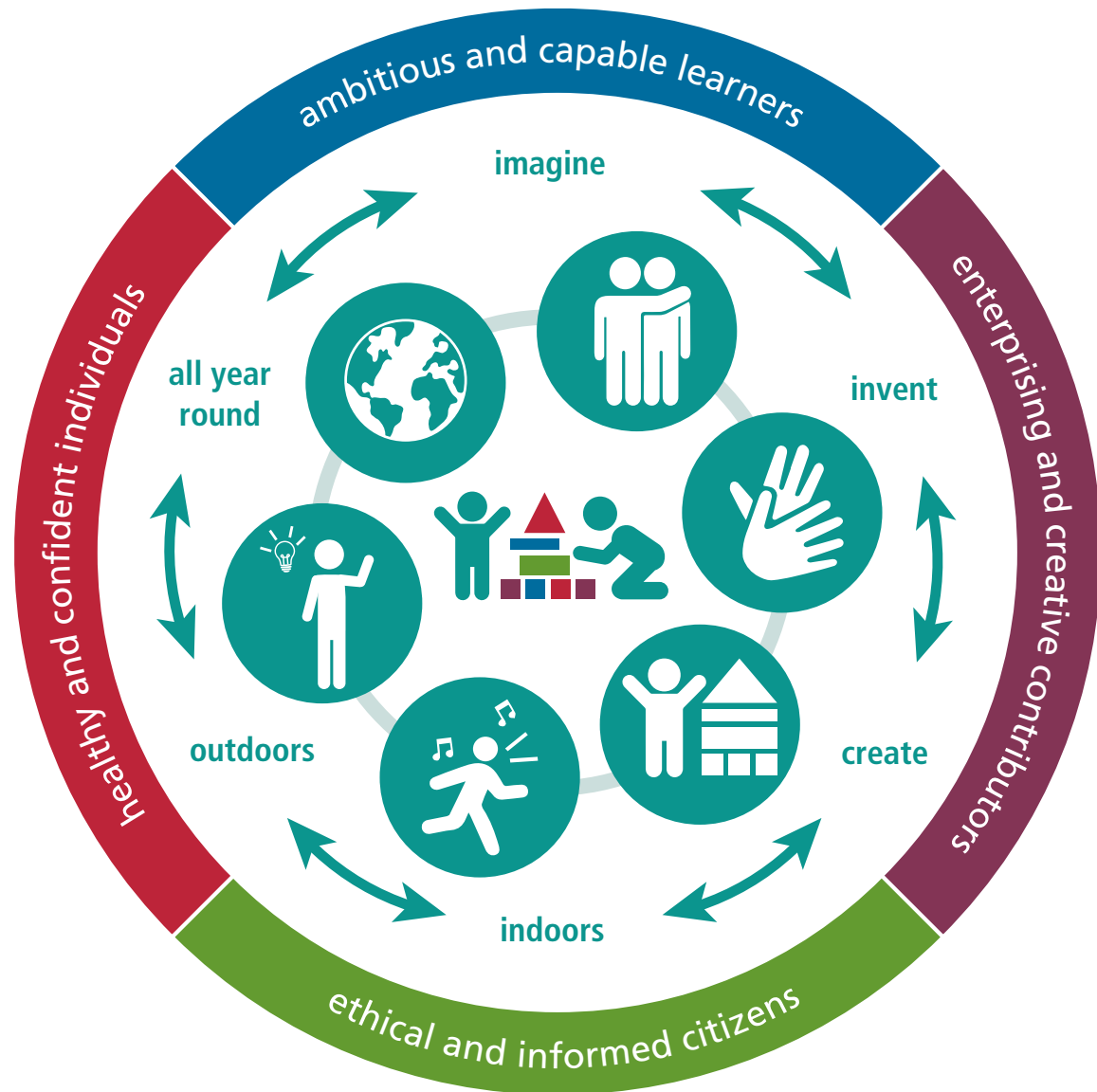


Professional learning: Play and play-based learning



Llywodraeth Cymru
Welsh Government



Play and play-based learning encourages children to:

- create friendships and enjoy positive relationships
- communicate with others and express themselves
- develop independence and take responsibility
- be lively and energetic, quiet and still
- be problem solvers and great thinkers
- explore and make sense of the world.