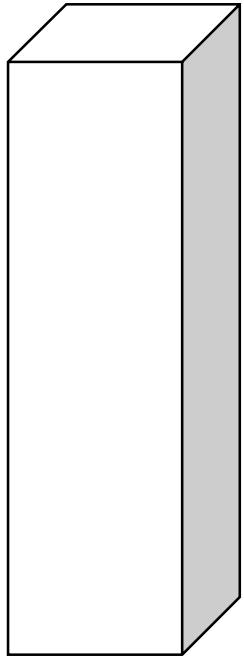
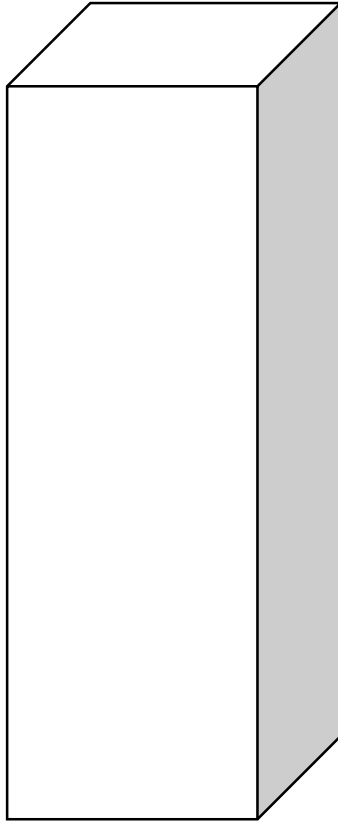


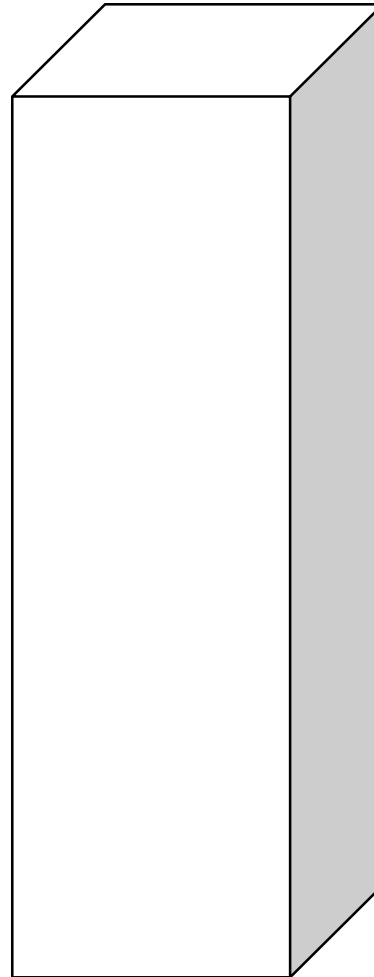
Cereal Box (1)



375g



500g



750g

Sheet 1: Three sizes of cereal box

Often, cereals come in boxes offering three quantities:

375 g

500 g

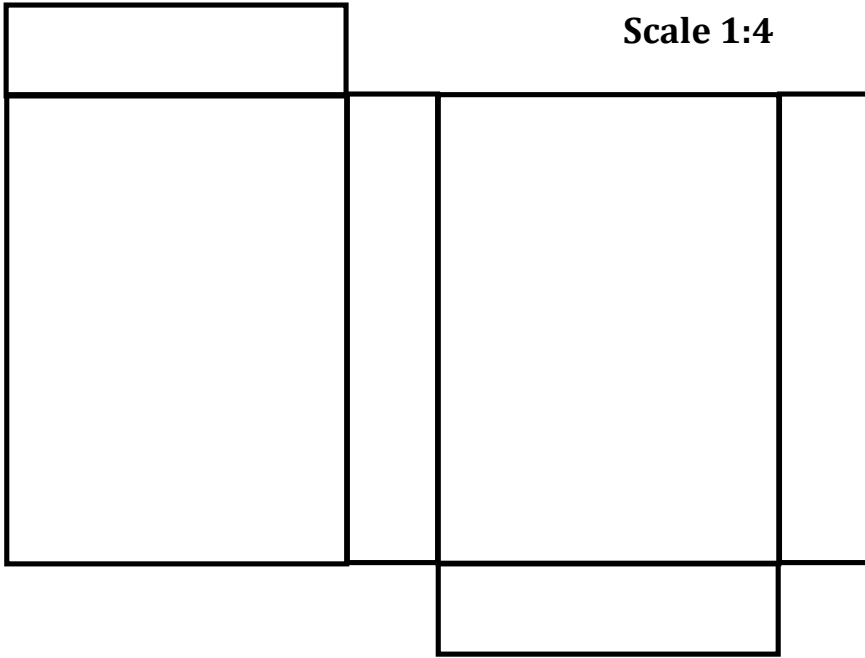
750 g

The dimensions of the three boxes shown are:

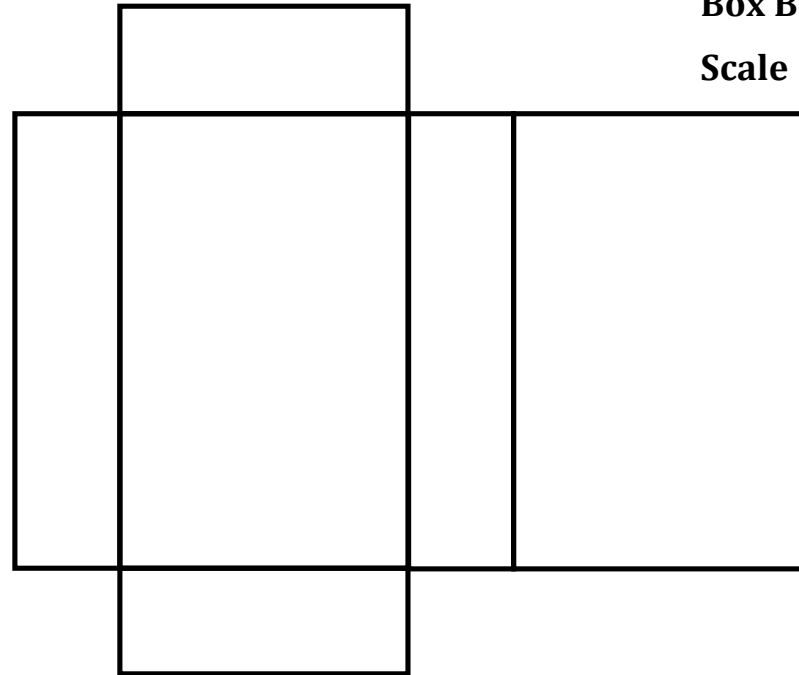
Contents	Dimensions (mm) (W × L × H)
Small (375 g)	57 × 190 × 279
Medium (500 g)	71 × 192 × 303
Large (750 g)	80 × 232 × 318

Are the boxes mathematically similar?

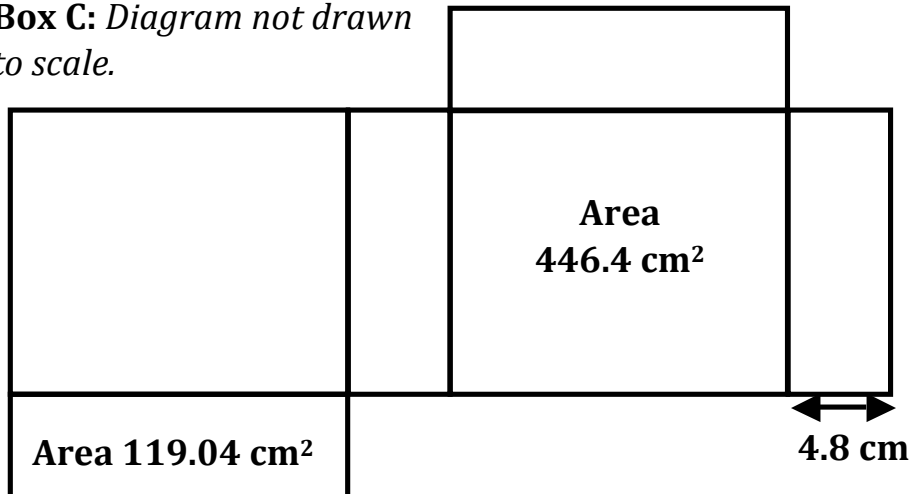
Box A
Scale 1:4



Box B
Scale 1:5



Box C: *Diagram not drawn to scale.*

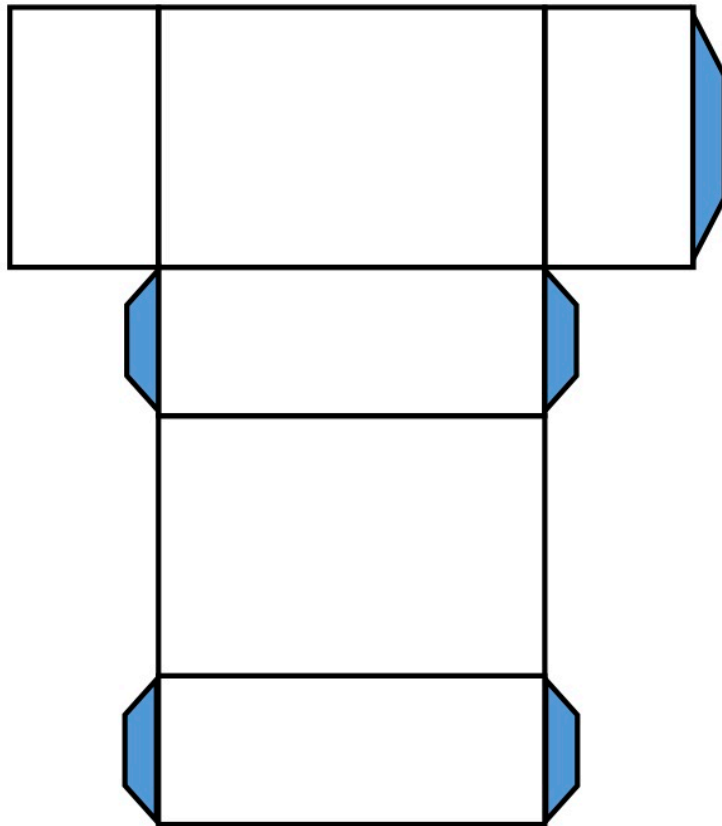


Sheet 2: Three diagrams

Here are three diagrams of nets of cereal boxes, without tabs.

Which of these boxes would hold the greatest volume?

Sheet 3: A net of a cereal box



Scale 1:2

Cereal Box

This is a diagram of a net of a cereal box.

If the real cereal box were made, what would be its volume?

Are there enough tabs drawn on this net of the box? If not, where else should any tabs be drawn? What would be the least number of tabs needed?

If this box contains 20 g of cereal, what could be the dimensions of a similar box that contained 30 g of the same cereal?

What dimensions could you use if the box did not have to be similar?